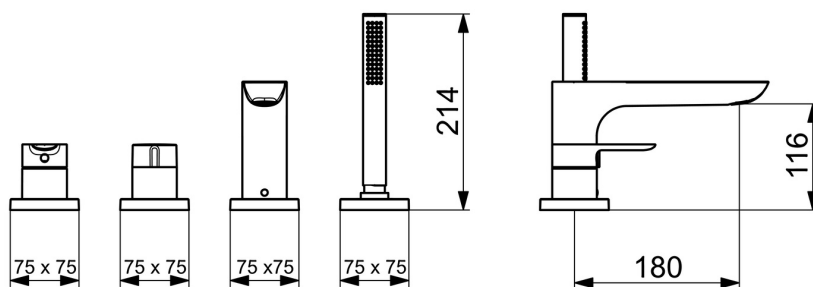
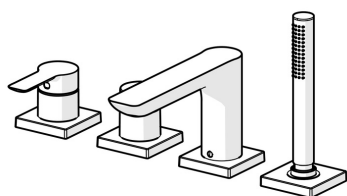


EAN: 4057304014512
static.hansa.com/06442493



- Bathtub & Shower
- Trim Kit, Single-lever
- Rim mounted
- Chrome
- Hidden aerator, Standard aerator
- Single operating lever/handle, Hot/Cold symbols
- Hand shower, Shower hose (1750 mm)
- Intense - invigorating water stream
- ø 40 mm ceramic cartridge for flow and temperature control, Non-return valve(s), Litter filter(s)
- Inner body made of DZR brass
- 1 spray function



Technical data

Flow properties

Flow-rate at 3 bar

20.4 / 13.2 l/min

Technical properties

Hot water supply

max. +80°C

Working pressure

0.5-10 bar

Projection

180 mm

Backflow prevention (EN1717)

EB

Material

Brass

Regulations

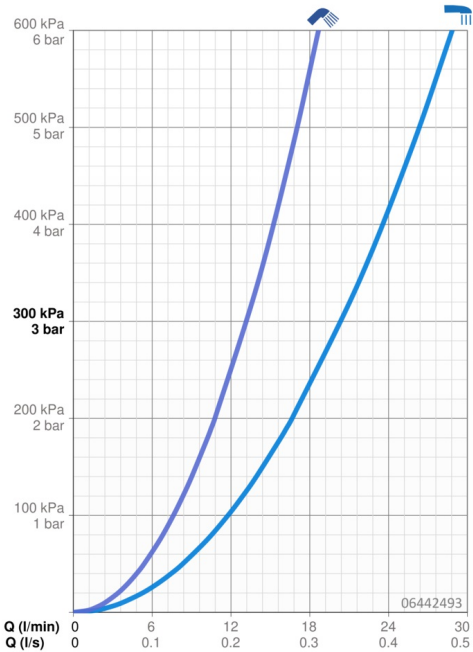
EN standard

EN 817, EN 1112, EN 1113

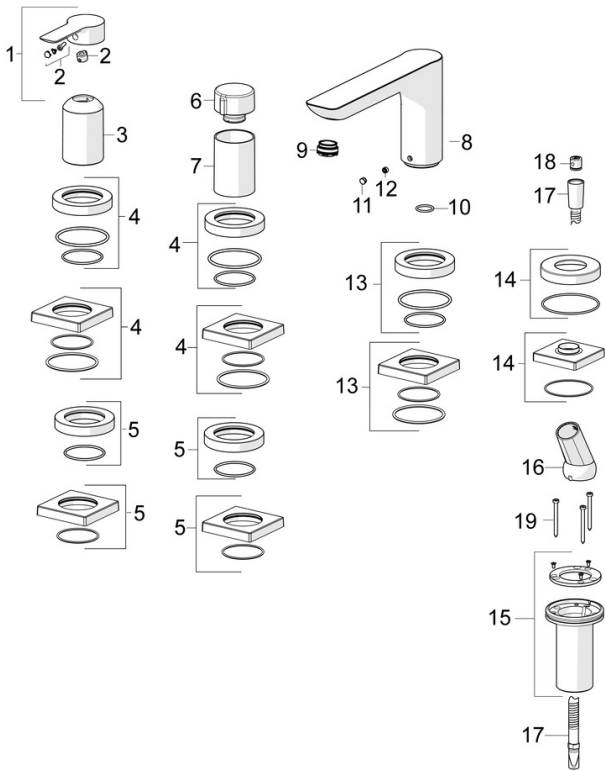
Approvals and Declarations

Declaration of conformity

DoC



Spare parts



SP06442473

	Name	Code
01	Lever	1004277V
02	Symbol plug	59914573
03	Cover sleeve	59914572
04	Cover plate, d 72 mm, for Compact	59914667
04	Cover flange, 75x75 mm	59914213
05	Cover flange, 75x75 mm	59914214
05	Cover plate, d 72 mm	59914668
06	Flow control handle	59914669
07	Cover sleeve	59914671
08	Spout, L=180	59913736
09	Aerator, M24x1 D, CC	59913720
10	O-ring, d 18x2	59913291
11	Cover plug	59911840
12	Screw, M6x9.5	59901609
13	Cover flange, 75x75 mm	59914211
13	Cover plate, d 72 mm	59913278
14	Cover plate, d 72 mm	59914672
14	Cover flange, 75x75 mm	1003885V
15	Passing-through bushing	59914673
16	Holder	59912282
17	Shower hose, L=1750, G1/2-M12x1	59912281
18	Non-return valve	59905714
19	Screw, M4x45	59912291